



# Cambridge International AS & A Level

CANDIDATE  
NAME
CENTRE  
NUMBER

--	--	--	--	--

CANDIDATE  
NUMBER

--	--	--	--

## INFORMATION TECHNOLOGY

9626/11

Paper 1 Theory

May/June 2025

1 hour 45 minutes

You must answer on the question paper.

No additional materials are needed.

### INSTRUCTIONS

- Answer **all** questions.
- Use a black or dark blue pen.
- Write your name, centre number and candidate number in the boxes at the top of the page.
- Write your answer to each question in the space provided.
- Do **not** use an erasable pen or correction fluid.
- Do **not** write on any bar codes.
- You may use an HB pencil for any diagrams, graphs or rough working.
- Calculators must **not** be used in this paper.

### INFORMATION

- The total mark for this paper is 70.
- The number of marks for each question or part question is shown in brackets [ ].

This document has **16** pages. Any blank pages are indicated.



- 1 A teacher is collecting information from her students about what items they recycle.

Describe **two** factors that can affect the quality of the information gathered in this scenario.

Factor 1 .....

.....

.....

.....

Factor 2 .....

.....

.....

.....

[2]





Discuss the benefits and drawbacks of using a spreadsheet to undertake this task.

[6]



3 Describe **four** ways a firewall increases security of personal data.

Way 1 .....

.....

.....

.....

Way 2 .....

.....

.....

.....

Way 3 .....

.....

.....

.....

Way 4 .....

.....

.....

.....

[4]





[6]

Explain why the manager would choose off-the-shelf software.

[6]

© U



6 Describe, by referring to **two** affected groups, what is meant by the digital divide.

.....

.....

.....

.....

.....

.....

.....

.....

.....

..... [4]



**(a)** Describe the use of different sensors to collect data about the weather.

..... [6]

© U



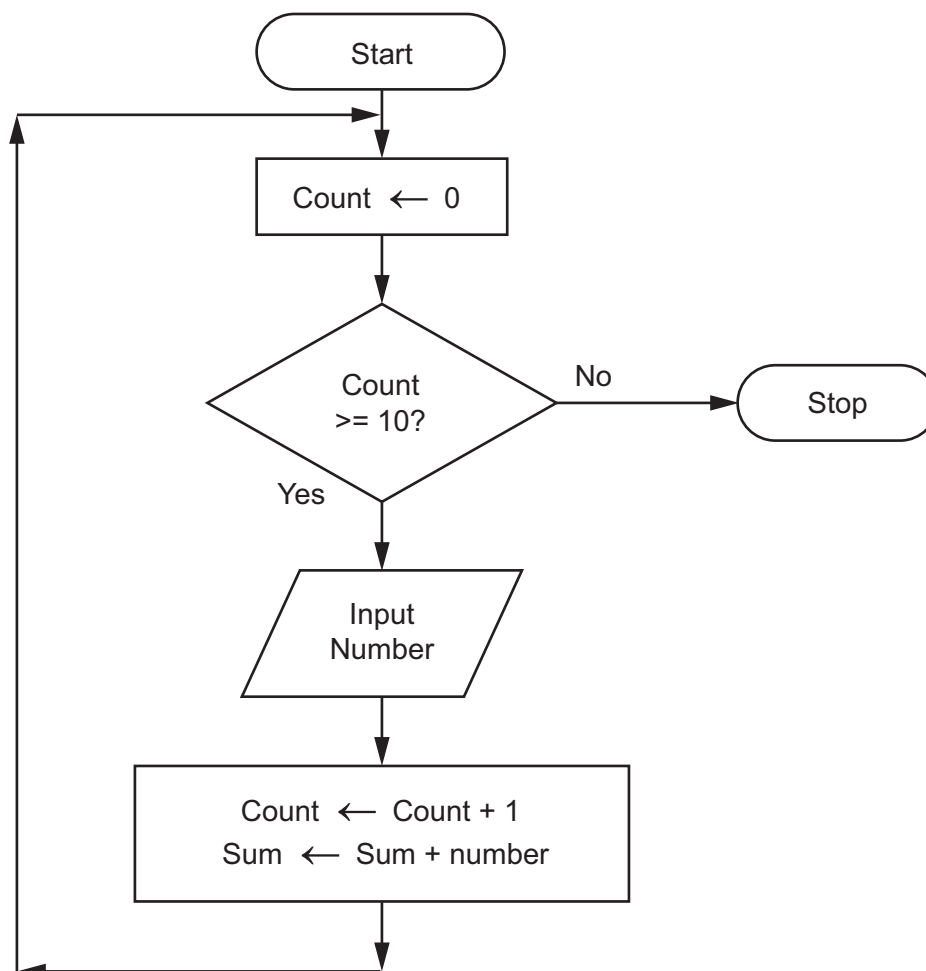


[6]

- Describe the process of electronic transfer of funds.

[6]

There are errors and omissions in the flowchart.



Explain **two** corrections that should be made to the flowchart.

..... [4



10 Describe the following types of database query:

(a) summary

.....

.....

.....

.....

.....

..... [2]

(b) complex

.....

.....

.....

.....

.....

..... [2]

(c) nested

.....

.....

.....

.....

.....

..... [2]





[8]



12 A spreadsheet is to be used to store students' examination results.

Each examination is marked out of 60, with the lowest mark being 0.

Only whole marks are allowed.

Each mark is validated using this validation rule  $\geq 0$  and  $\leq 60$

The developer is trying to test the validation rule.

Complete the table for the **three** types of test data. For each mark the developer enters, suggest how the validation rule deals with the mark.

Type of test data	Example of mark entered	How the validation rule deals with the mark entered
Normal		
Abnormal		
Extreme		

[6]







Permission to reproduce items where third-party owned material protected by copyright is included has been sought and cleared where possible. Every reasonable effort has been made by the publisher (UCLES) to trace copyright holders, but if any items requiring clearance have unwittingly been included, the publisher will be pleased to make amends at the earliest possible opportunity.

To avoid the issue of disclosure of answer-related information to candidates, all copyright acknowledgements are reproduced online in the Cambridge Assessment International Education Copyright Acknowledgements Booklet. This is produced for each series of examinations and is freely available to download at [www.cambridgeinternational.org](http://www.cambridgeinternational.org) after the live examination series.

Cambridge Assessment International Education is part of Cambridge Assessment. Cambridge Assessment is the brand name of the University of Cambridge Local Examinations Syndicate (UCLES), which is a department of the University of Cambridge.

