



# Cambridge International AS & A Level

CANDIDATE  
NAME



CENTRE  
NUMBER

--	--	--	--	--

CANDIDATE  
NUMBER

--	--	--	--

## INFORMATION TECHNOLOGY

9626/13

Paper 1 Theory

May/June 2025

1 hour 45 minutes

You must answer on the question paper.

No additional materials are needed.

### INSTRUCTIONS

- Answer **all** questions.
- Use a black or dark blue pen.
- Write your name, centre number and candidate number in the boxes at the top of the page.
- Write your answer to each question in the space provided.
- Do **not** use an erasable pen or correction fluid.
- Do **not** write on any bar codes.
- You may use an HB pencil for any diagrams, graphs or rough working.
- Calculators must **not** be used in this paper.

### INFORMATION

- The total mark for this paper is 70.
- The number of marks for each question or part question is shown in brackets [ ].

This document has **16** pages. Any blank pages are indicated.



- 1 Observation is one method of collecting direct data.

Identify and describe **two** other ways of collecting direct data.

Way 1 .....

Description .....

.....

.....

.....

Way 2 .....

Description .....

.....

.....

.....

[4]





[5]

..... [6]

..... [3]

[3]

Identify and justify **three** types of test data that can be used to test this numerical data.

..... [6]

[6]



6 (a) Give reasons why a person editing a video would use fading effects.

.....

.....

.....

.....

.....

..... [2]

(b) Give reasons why a person editing a video would use captions.

.....

.....

.....

.....

.....

..... [2]



7

For marks above 70, the program will output “You have achieved a Distinction”.  
For marks from 55 to 70, the program will output “You have achieved a Merit”.  
For marks from 40 to 54, the program will output “You have achieved a Pass”.  
For marks below 40, the program will output “You have not reached the Pass mark”.

Write a pseudocode algorithm using REPEAT...UNTIL which allows the teacher to input 20 test marks and outputs the correct message for each inputted mark.

[8]

[8]



8 Interpreters and device drivers are types of system software.

(a) Describe the functions of device drivers.

.....

.....

.....

.....

.....

.....

.....

.....

.....

.....

..... [4]

(b) Justify the use of an interpreter.

.....

.....

.....

.....

.....

.....

.....

.....

.....

.....

..... [4]



[5]





10 A student is considering defragmenting their hard disk.

(a) Describe the benefits of defragmentation.

.....

.....

.....

.....

.....

.....

.....

..... [3]

(b) Describe the drawbacks of defragmentation.

.....

.....

.....

.....

.....

.....

.....

..... [3]



..... [8]

[8]



12 Define the following types of database key fields:

(a) Composite key .....

.....

..... [1]

(b) Compound key .....

.....

..... [1]

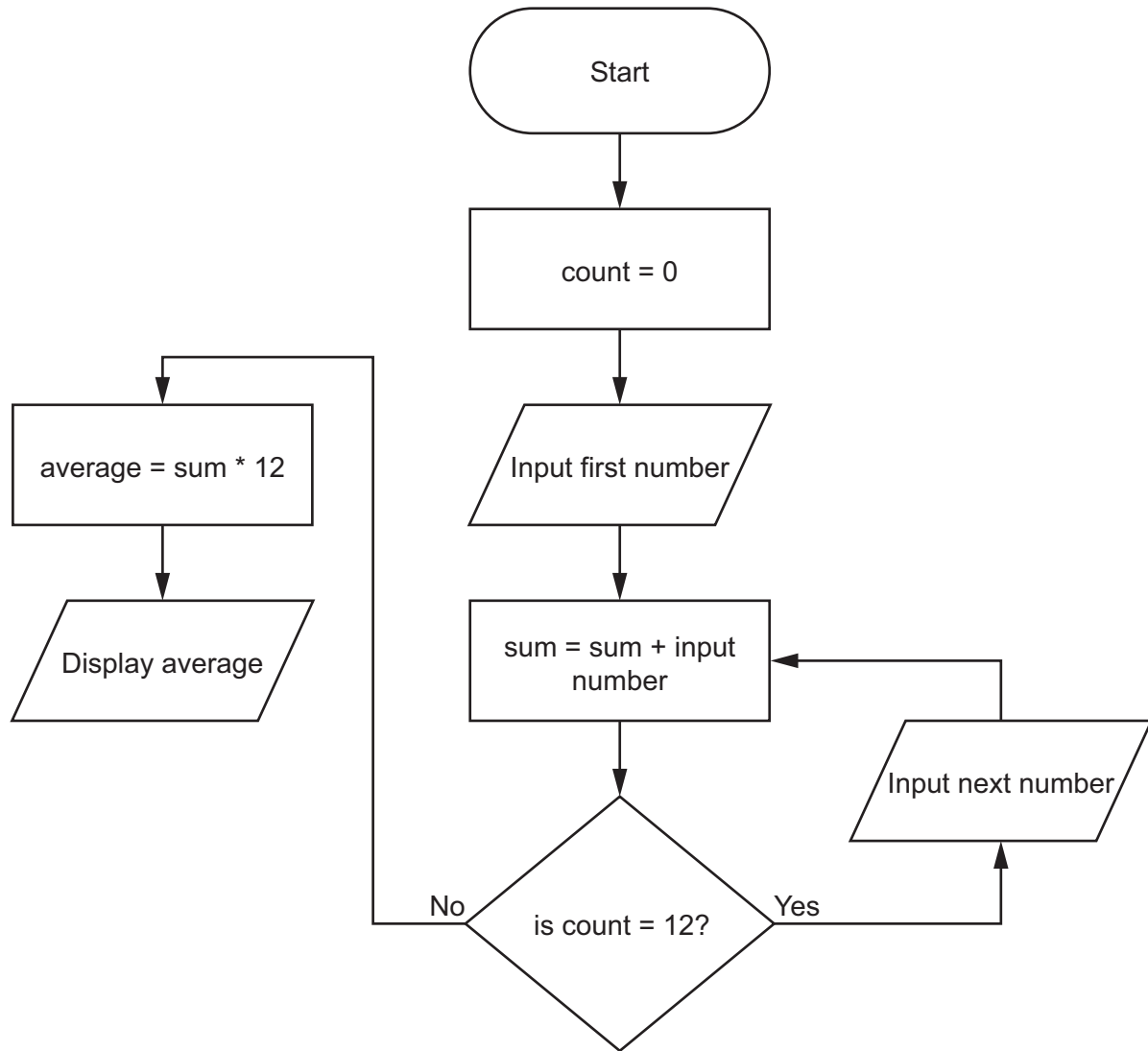




13 The average (mean) of a set of 12 numbers is calculated by:

- adding the numbers together to get a total
- dividing the total by 12.

A student has attempted to draw a flowchart of an algorithm which finds the average of 12 numbers. They have made some errors.





Redraw the flowchart, with the errors corrected.

[5]









Permission to reproduce items where third-party owned material protected by copyright is included has been sought and cleared where possible. Every reasonable effort has been made by the publisher (UCLES) to trace copyright holders, but if any items requiring clearance have unwittingly been included, the publisher will be pleased to make amends at the earliest possible opportunity.

To avoid the issue of disclosure of answer-related information to candidates, all copyright acknowledgements are reproduced online in the Cambridge Assessment International Education Copyright Acknowledgements Booklet. This is produced for each series of examinations and is freely available to download at [www.cambridgeinternational.org](http://www.cambridgeinternational.org) after the live examination series.

Cambridge Assessment International Education is part of Cambridge Assessment. Cambridge Assessment is the brand name of the University of Cambridge Local Examinations Syndicate (UCLES), which is a department of the University of Cambridge.

