

**COMPETENCE BASED CURRICULUM
HOMEWORK ENGAGEMENT PROGRAM
GRADE 4 2024 AUGUST
SCIENCE AND TECHNOLOGY**

LEARNERS INSTRUCTIONS

1. Write your name and assessment number in the spaces provided above
2. Answer all the questions in this paper.
3. All your answers must be written in the spaces provided in the question paper.
4. Learners should check the question paper to ascertain that all the pages are printed as indicated and that no questions are missing.
5. Learners must answer the questions in English

(2 Marks)

1. The two kinds of things in the environment are

i) _____

ii) _____

(2 Marks)

2. Classify the following into living and nonliving things.

Stone, Dog, Paper, Earthworm, Flag, Frog, Bottle, Plant, Cow, Jembe.

	Living things	Non-living things
a)		
b)		
c)		
d)		

(1 Marks)

3. The two kinds of things in the environment are:

a.

b.

(2 Marks)

4. Name two food crops you know

a.

b.

(2 Marks)

5. The picture below shows that plants
(grow, die)



(3 Marks)

6. List three characteristics of living things

- a.
- b.
- c.

(2 Marks)

7. Name any three plants found in your locality (area)

- a.
- b.
- c.

(2 Marks)

8. State two characteristics of plants as living things

- a.
- b.

(3 Marks)

9. Name three things used when handling plants in order to ensure safety.

- a.
- b.
- c.

(2 Marks)

10. Draw and colour the protective clothing that protects our eyes when handling plants.



(4 Marks)

11. Match the following plants with the parts we eat

- a) Spinach seeds
- b) Sugarcane roots
- c) Sweet potato stem
- d) Maize leaves

(5 Marks)

12. What part of a plant do we eat?

- a. Sugarcane - _____
- b. Spinach – _____
- c. Tomato – _____
- d. Kaies – _____
- e. yams – _____

(1 Marks)

13. The following are steps during the preparation of guava fruit seeds but not in the correct order:

- i. Wash the seeds and soak them.
- ii. Collect the guava fruit.
- iii. Sort the good seeds and dispose the bad ones.
- iv. Remove the fleshy part with a knife.
- v. Sun dry the good seeds.

Which of the following shows the correct order of the steps

- A. ii, iv, i, iii, v
- B. ii, iv, iii, i, v
- C. ii, i, ii, iv, v
- D. ii, i, iv, iii, v

(1 Marks)

14. Giving rise to a young one of the same kind is called _____
(reproduction, feeding, response to changes)

(4 Marks)

15. Name the feeding mode of the following animals.

a) Mosquito _____

b) Goat _____

(2 Marks)

16. Write the characteristic of animals shown below



(2 Marks)

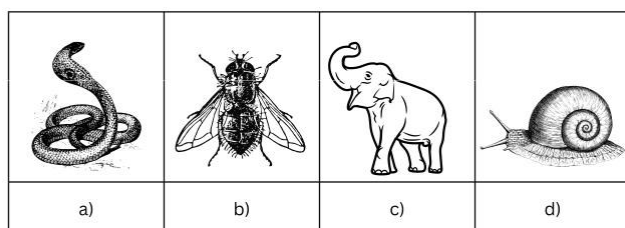
17. Name two characteristics of animals

a.

b.

(2 Marks)

18. State whether the following animals are vertebrates or invertebrates.



(2 Marks)

19. Name two protective clothing that you need when handling animals

- a.
- b.

(10 Marks)

20. What are the characteristics of a cow as a living thing? Name five.

- a.
- b.
- c.
- d.
- e.

21. Name the type of teeth used for cutting and biting food

(1 Marks)

22. Name any four parts of the digestive system.

(8 Marks)

- a) _____
- b) _____
- c) _____
- d) _____

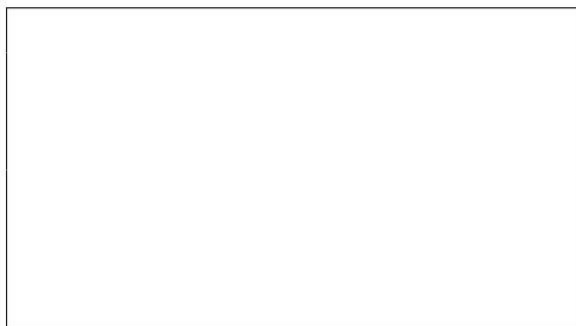
23. Which disease can be prevented through participating in running exercise?

(2 Marks)

- A. Covid 19
- B. Cough
- C. Obesity
- D. Tetanus

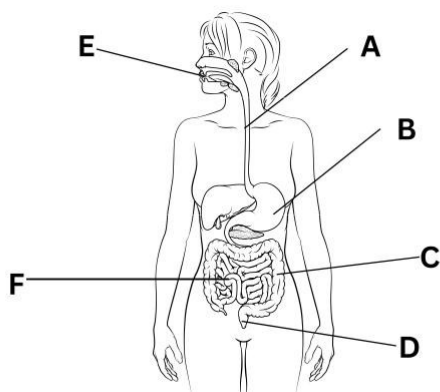
24. Draw and colour a molar tooth.

(2 Marks)



(2 Marks)

25. The picture below shows the digestive system. Name the parts marked.



26. The breaking down of food into small particles that are absorbed by our bodies is called

(1 Marks)

27. State two characteristics of canines

(2 Marks)

- a.
- b.

28. What is the air pollutant in the picture below?

(2 Marks)



29. Motor vehicle pollute air because they produce a lot of

(2 Marks)

.....
(water, smoke)

30. Name one way people can help reduce air pollution.

(2 Marks)

(4 Marks)

31. Name two air pollutants

a. _____

b. _____

(3 Marks)

32. Answer the following questions.

a. Harmful substances found in the environment are called _____

b. Digested food is absorbed in the _____

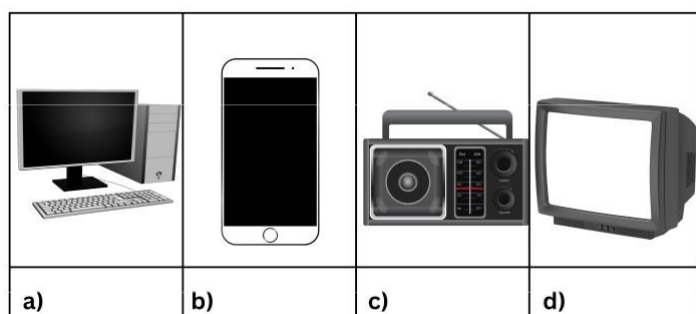
c. Which type of teeth is used for biting and cutting _____

(1 Marks)

33. Air pollution affect growth of plants. _____
(True, False)

(2 Marks)

34. Write the name of each of the digital devices shown below.



(2 Marks)

35. Work out the Sudoku puzzle below by filling in the blank squares with correct numbers.

3	2	1	4
1			2
2			1
4	1	2	3

(2 Marks)

36. State two safety precautions to observe when using digital devices a.
b.

(2 Marks)

37. Which coding language is known for its simplicity and readability?

- A. Latin
- B. Python
- C. JavaScript
- D. C++

(2 Marks)

38. The part of a computer that controls a pointer on the screen is the
(speaker, mouse, cable)

(2 Marks)

39. Which device is used to input graphics directly into a computer?

- A. Scanner
- B. Digital camera
- C. Graphics tablet
- D. Plotter

(2 Marks)

40. Can you name two main sources of air pollution?

(Confidential)

Marking Scheme

- | | |
|--|-----------|
| 1. i) Living things | (2 Marks) |
| ii) Non-Living things | |
| 2. Living things - Dogs, Earthworm, Cow, Frog, Plant.
Non-living things - Stone, Paper, Flag, Bottle Jembe. | (2 Marks) |
| 3. a. Living things | (1 Marks) |
| b. Non-living things | |
| 4. a. maize any other) | (2 Marks) |
| b. beans | |
| 5. Die | (2 Marks) |
| 6. a. They feed | (3 Marks) |
| b. They move | |
| c. They reproduce | |
| 7. Any sensible answer | (2 Marks) |
| 8. a. They grow | (2 Marks) |
| b. They reproduce | |
| 9. a. Gloves | (3 Marks) |
| b. forceps goggles | |
| c. tongs | |
| d. overcoats | |
| e. gumboots etc. | |
| 10. Check drawing. | (2 Marks) |
| 11. a) leaves | |
| b) stem | |

- c) roots
- d) seeds

(4 Marks)

(5 Marks)

12. A-stem
B. - leaf
C-fruit
D- stem
E- roots

(1 Marks)

13. A

(1 Marks)

14. reproduction.

(4 Marks)

15. a) sucking
b) chewing

(2 Marks)

16. Reproduction.

(2 Marks)

17. a. they move
b. they grow

(2 Marks)

18. a. Vertebrate.
b. Invertebrate.
c. Vertebrate.
d. Invertebrate.

(2 Marks)

19. Gloves, gumboots

(10 Marks)

20. a. They feed.
b. They grow.
c. They breathe.
d. They die.
e. They remove waste.
f. They reproduce.
g. They move.
(any 5)

21. Incisors

(1 Marks)

22. a) mouth
b) stomach
c) gullet
d) small intestines
(*any other part of the digestive system*) (8 Marks)
23. C (2 Marks)
24. Check drawing. (2 Marks)
25. A. Food pipe.
B. Stomach.
C. Large intestine (colon).
D. Rectum.
E. Mouth.
F. Small intestine. (2 Marks)
26. digestion (1 Marks)
27. a. Sharp and pointed
b. Have are not (2 Marks)
28. Smoke. (2 Marks)
29. Smoke (2 Marks)
30. Using public transportation, biking, or walking instead of driving cars. (2 Marks)
31. a.smoke
b.dust (any other air pollutant named by the learner) (4 Marks)
32. a. pollutants
b. small intestines
c. incisors (3 Marks)
33. TRUE (1 Marks)
34. a. Desktop computer.
b. Smart phone.
c. Radio.
d. Television. (2 Marks)

35. 3,4 4,3 5. (2 Marks)

36. a. Do not make friends with unknown people online (2 Marks)
b. Avoid touching open socket when connecting digital devices
c. Drawing
d. Mouse

37. B (2 Marks)

38. mouse (2 Marks)

39. C (2 Marks)

40. Industrial emissions and vehicle exhaust. (2 Marks)