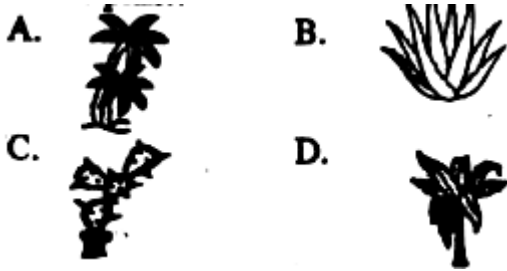


# **COMPETENCE BASED CURRICULUM HOMEWORK ENGAGEMENT PROGRAM GRADE 6 2024 AUGUST SCIENCE AND TECHNOLOGY**

---

1. Which one of the following shows a cactus plant?



- A. A
- B. B
- C. C
- D. D

2. Some Grade six learners were asked to name the part of a plant used for absorption of water and mineral salts:

Kamene: Branch

Ngugi: Leaves

Wayua: Stem

Hassan: Roots

Who among them was correct?

- A. Kamene
- B. Ngugi
- C. Hassan
- D. Wayua

3. Which among the following plants has a different root system?

- A. Carrot
- B. Sugarcane
- C. Groundnuts
- D. Pea

4. The following are characteristics of a certain small animal:

- (i) *Three body parts.*
- (ii) *Three pairs of legs.*

(iii) Presence of compound eyes.

(iv) No backbone.

Which of the following small animal has been described above?

- A. Scorpion
- B. Butterfly
- C. Centipede
- D. Spider

5. The chart below shows a part of the classification of invertebrates.



In which category is a mite likely to fall?

- A. X
- B. Z
- C. Y
- D. W

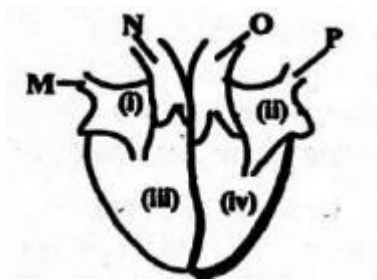
6. The illustration below shows an importance of invertebrates to man.



The illustration above shows the importance of invertebrates in

- A. nectar collection
- B. feeding
- C. pollination
- D. decoration

7. Use the diagram below to answer the following questions.



The chamber marked iii is connected to the vessel marked

- A. O
- B. M
- C. P

D. N

8. Which of the labelled parts shows the right auricle?

- A. iv
- B. i
- C. ii
- D. iii

9. The vessel marked O

- A. is the main artery
- B. carries deoxygenated blood to the lungs
- C. carries oxygenated blood to the heart for pumping
- D. is the main vein

10. Blood plasma transports all the following but not

- A. digested food
- B. waste materials
- C. hormones
- D. haemoglobin

11. In computing, the part of a computer used for display can also be used

- A. for processing data
- B. to edit a document
- C. to print a document
- D. for typing

12. Amanda drew a device like the one shown below.



What is the function of the computing gadget Amanda drew?

- A. Saving typed documents
- B. Printing documents
- C. Retrieving lost documents
- D. Downloading files

13. When creating a Word document, what is the use of a cursor?

- A. Correcting spelling errors
- B. Showing the beginning of a text
- C. Creating spaces between words in a text
- D. Showing the end of a text

14. A space bar is found on the

- A. mouse
- B. keyboard
- C. CPU
- D. monitor

15. When handling computing devices, our hands should be

- A. dry
- B. smooth
- C. wet
- D. visible

## Answers

1. C
2. Hassan
3. Sugarcane
4. Butterfly
5. W
6. pollination
7. N
8. i
9. is the main artery
10. haemoglobin
11. to edit a document
12. Printing documents
13. Showing the end of a text
14. keyboard
15. dry